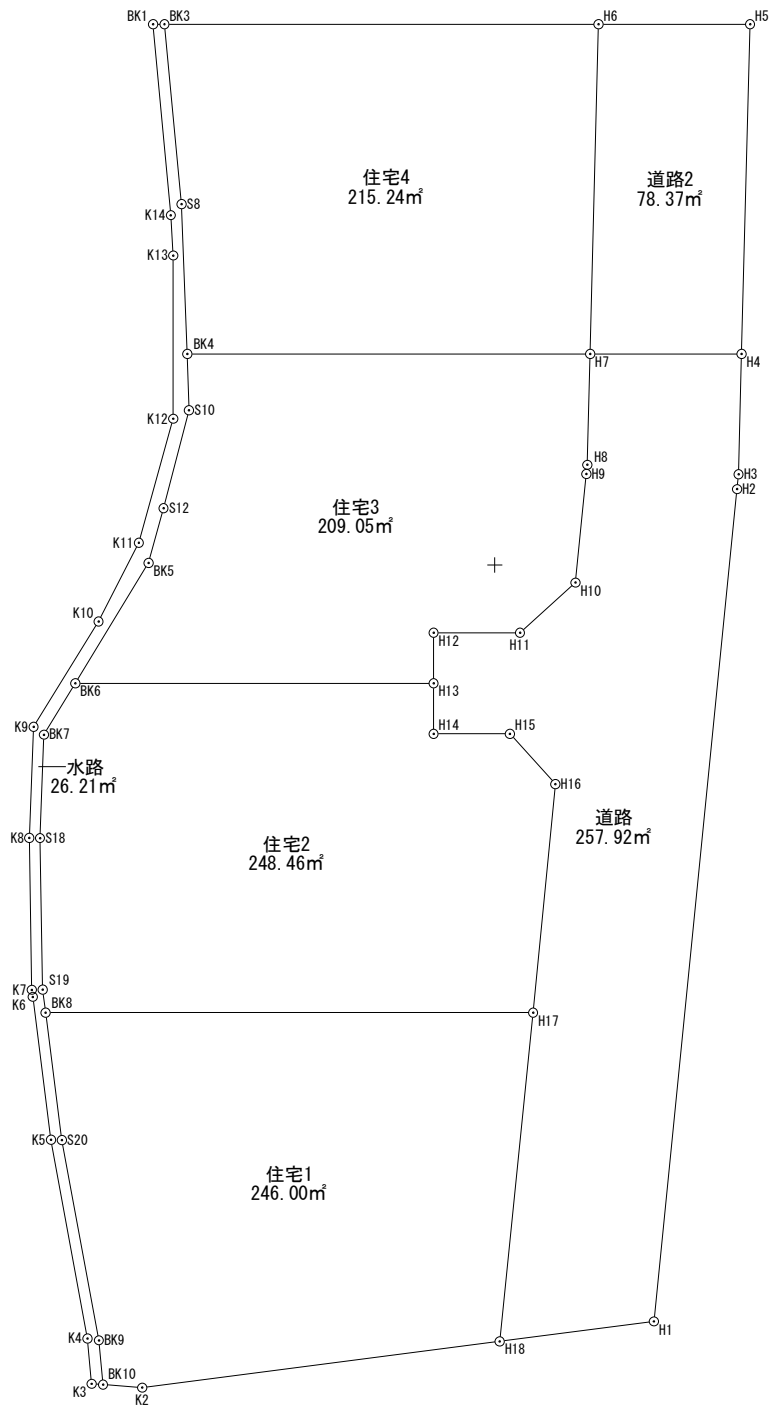


確定測量図

S=1/300



地番		住宅1			
測点	Xn	Yn	(Xn+1 - Xn-1)Yn	距離	
H17	-214717.727	-52398.481	-682123.425658	19.312	
BK8	-214717.727	-52417.793	264290.512306	5.083	
S20	-214722.769	-52417.147	680269.733766	8.070	
BK9	-214730.705	-52415.682	507960.374262	1.763	
BK10	-214732.460	-52415.518	98121.849696	1.551	
K2	-214732.577	-52413.971	-89889.960265	14.286	
H18	-214730.745	-52399.803	-778137.074550	13.085	
			倍面積	492.009557	
			面積	246.0047785	
			地積	246.00 m ²	

地番		住宅2			
測点	Xn	Yn	(Xn+1 - Xn-1)Yn	距離	
H17	-214717.727	-52398.481	-474311.050012	9.095	
H16	-214708.675	-52397.599	-578574.288158	2.684	
H15	-214706.685	-52399.400	-104274.806000	3.025	
H14	-214706.685	-52402.425	-104804.850000	2.000	
H13	-214704.685	-52402.425	-104804.850000	14.195	
BK6	-214704.685	-52416.620	106615.405080	2.382	
BK7	-214706.719	-52417.859	321269.057811	4.098	
S18	-214710.814	-52418.015	529159.861425	6.001	
S19	-214716.814	-52417.910	362365.011830	0.920	
BK8	-214717.727	-52417.793	47857.445009	19.312	
			倍面積	496.936985	
			面積	248.4684925	
			地積	248.46 m ²	

地番		住宅3			
測点	Xn	Yn	(Xn+1 - Xn-1)Yn	距離	
H7	-214691.643	-52396.224	-229914.630912	15.958	
BK4	-214691.643	-52412.182	116564.692768	2.225	
S10	-214693.867	-52412.113	320133.186204	4.013	
S12	-214697.751	-52413.122	317046.974978	2.245	
BK5	-214699.916	-52413.716	363436.706744	5.584	
BK6	-214704.685	-52416.620	249974.860780	14.195	
H13	-214704.685	-52402.425	-104804.850000	2.000	
H12	-214702.685	-52402.425	-104804.850000	3.424	
H11	-214702.685	-52399.001	-104326.410991	2.966	
H10	-214700.694	-52396.802	-329471.090976	4.318	
H9	-214696.397	-52396.373	-244324.287299	0.368	
H8	-214696.031	-52396.336	-249092.181344	4.389	
			倍面積	418.119952	
			面積	209.0599760	
			地積	209.05 m ²	

地番		住宅4			
測点	Xn	Yn	(Xn+1 - Xn-1)Yn	距離	
H6	-214678.585	-52395.890	-684185.531620	17.195	
BK3	-214678.585	-52413.085	373076.339030	7.150	
S8	-214685.703	-52412.408	684401.223664	5.944	
BK4	-214691.643	-52412.182	311328.361080	15.958	
H7	-214691.643	-52396.224	-684189.892992	13.062	
			倍面積	430.499162	
			面積	215.2495810	
			地積	215.24 m ²	

地番		道路			
測点	Xn	Yn	(Xn+1 - Xn-1)Yn	距離	
H2	-214696.993	-52390.402	-1757802.767904	0.592	
H3	-214696.404	-52390.344	-280288.340400	4.763	
H4	-214691.643	-52390.222	-249429.846942	6.002	
H7	-214691.643	-52396.224	229914.630912	4.389	
H8	-214696.031	-52396.336	249092.181344	0.368	
H9	-214696.397	-52396.373	244324.287299	4.318	
H10	-214700.694	-52396.802	329471.090976	2.966	
H11	-214702.685	-52399.001	104326.410991	3.424	
H12	-214702.685	-52402.425	104804.850000	2.000	
H13	-214704.685	-52402.425	209609.700000	2.000	
H14	-214706.685	-52402.425	104804.850000	3.025	
H15	-214706.685	-52399.400	104274.806000	2.684	
H16	-214708.675	-52397.599	578574.288158	9.095	
H17	-214717.727	-52398.481	1156434.475670	13.085	
H18	-214730.745	-52399.803	640797.190887	6.160	
H1	-214729.956	-52393.694	-1768391.959888	33.127	
			倍面積	515.847103	
			面積	257.9235515	
			地積	257.92 m ²	

地番		道路2			
測点	Xn	Yn	(Xn+1 - Xn-1)Yn	距離	
H6	-214678.585	-52395.890	684185.531620	13.062	
H7	-214691.643	-52396.224	684189.892992	6.002	
H4	-214691.643	-52390.222	-684111.518876	13.062	
H5	-214678.585	-52389.888	-684107.157504	6.002	
			倍面積	156.748232	
			面積	78.3741160	
			地積	78.37 m ²	

地番		水路			
測点	Xn	Yn	(Xn+1 - Xn-1)Yn	距離	
BK1	-214678.585	-52413.536	396351.159232	7.595	
K14	-214686.147	-52412.833	479891.898948	1.597	
K13	-214687.741	-52412.738	422394.255542	6.465	
K12	-214694.206	-52412.741	596299.754357	5.097	
K11	-214699.118	-52414.101	420937.645131	3.502	
K10	-214702.237	-52415.694	382110.409260	4.903	
K9	-214706.408	-52418.271	449329.419012	4.404	
K8	-214710.809	-52418.438	545885.613332	6.014	
K7	-214716.822	-52418.341	329868.619913	0.283	
K6	-214717.102	-52418.300	311364.702000	5.705	
K5	-214722.762	-52417.581	709052.618187	7.998	
K4	-214730.629	-52416.138	506549.557632	1.805	
K3	-214732.426	-52415.969	95973.639239	0.452	
BK10	-214732.460	-52415.518	-90207.106478	1.763	
BK9	-214730.705	-52415.682	-507960.374262	8.070	
S20	-214722.769	-52417.147	-680269.733766	5.083	
BK8	-214717.727	-52417.793	-312147.957315	0.920	
S19	-214716.814	-52417.910	-362365.011830	6.001	
S18	-214710.814	-52418.015	-529159.861425	4.098	
BK7	-214706.719	-52417.859	-321269.057811	2.382	
BK6	-214704.685	-52416.620	-356590.265860	5.584	
BK5	-214699.916	-52413.716	-363436.706744	2.245	
S12	-214697.751	-52413.122	-317046.974978	4.013	
S10	-214693.867	-52412.113	-320133.186204	2.225	
BK4	-214691.643	-52412.182	-427893.053848	5.944	
S8	-214685.703	-52412.408	-684401.223664	7.150	
BK3	-214678.585	-52413.085	-373076.339030	0.451	