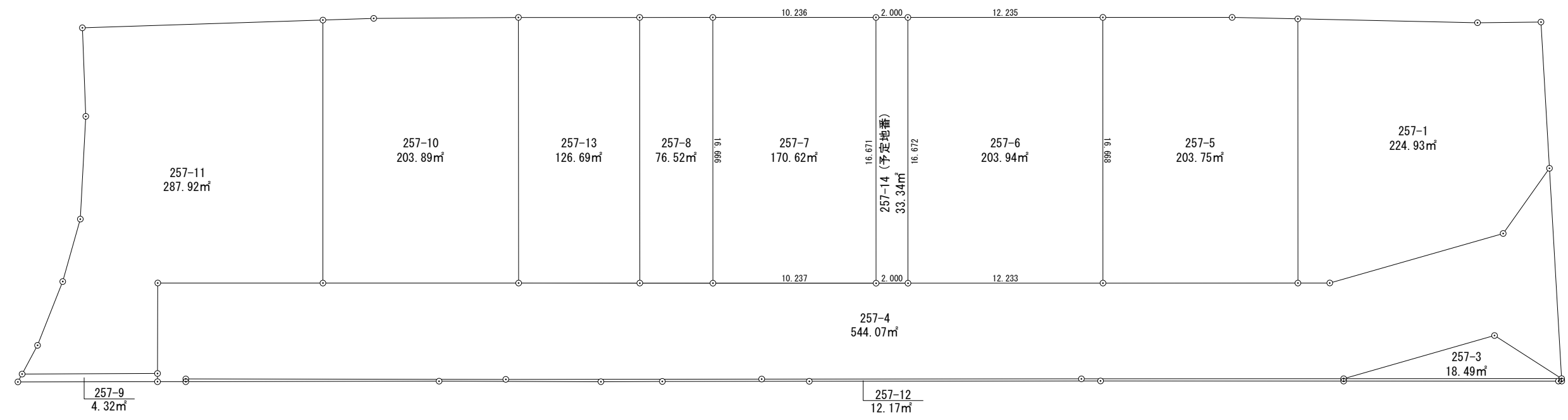


確定測量図
s=1/300



座標求積表

地番 257-1				
測点	Xn	Yn	(Xn+1 - Xn-1)Yn	距離
K14	-213466.466	-56111.623	-235781.039846	3.986
K15	-213469.026	-56114.678	533875.046492	11.275
HL1	-213475.980	-56123.553	1109618.766363	16.574
HK12	-213488.797	-56113.045	648161.782795	1.995
HK13	-213487.531	-56111.503	-592761.917692	11.317
HK14	-213478.233	-56105.052	-802470.558756	5.017
HK15	-213473.228	-56105.398	-660192.218266	9.191
		倍面積	449.861090	
		面積	224.9305450	
		地積	224.93	m ²

地番 257-3				
測点	Xn	Yn	(Xn+1 - Xn-1)Yn	距離
HK16	-213483.528	-56101.418	486567.598314	9.846
HK17	-213491.624	-56107.021	-32373.751117	13.674
HK25	-213482.951	-56096.449	-454156.851104	5.002
		倍面積	36.996093	
		面積	18.4980465	
		地積	18.49	m ²

地番 257-4				
測点	Xn	Yn	(Xn+1 - Xn-1)Yn	距離
HK15	-213473.228	-56105.398	-264705.267764	5.017
HK14	-213478.233	-56105.052	802470.558756	11.317
HK13	-213487.531	-56111.503	592761.917692	1.995
HK12	-213488.797	-56113.045	506420.231125	12.236
HK11	-213496.556	-56122.507	870740.696105	12.233
HK10	-213504.312	-56131.967	870438.412269	12.237
HK9	-213512.063	-56141.436	868844.863536	12.196
HK8	-213519.788	-56150.873	870675.436738	12.279
HK7	-213527.569	-56160.372	805620.536340	10.364
HK6	-213534.133	-56168.392	615886.418280	5.677
HK23	-213538.534	-56164.806	269478.739188	0.512
HK21	-213538.931	-56164.482	-41056.236342	1.777
HK19	-213537.803	-56163.109	-70540.864904	0.169
HK20	-213537.675	-56163.219	-720630.262989	20.081
HK28	-213524.972	-56147.666	-1285388.517738	16.058
HK27	-213514.782	-56135.256	-1286283.255984	20.060
HK26	-213502.058	-56119.748	-1299621.124184	16.457
HK17	-213491.624	-56107.021	-1039663.099130	9.846
HK16	-213483.528	-56101.418	-486567.598314	5.002
HK25	-213482.951	-56096.449	-577793.424700	13.214
		倍面積	1088.157980	
		面積	544.0789900	
		地積	544.07	m ²

地番 257-5				
測点	Xn	Yn	(Xn+1 - Xn-1)Yn	距離
HL1	-213475.980	-56123.553	-576613.383522	4.124
K16	-213478.523	-56126.799	431390.577114	8.114
HL2	-213483.666	-56133.075	1012247.741475	16.668
HK11	-213496.556	-56122.507	287964.583417	12.236
HK12	-213488.797	-56113.045	-1154582.013920	16.574
		倍面積	407.504564	
		面積	203.7522820	
		地積	203.75	m ²

地番 257-6				
測点	Xn	Yn	(Xn+1 - Xn-1)Yn	距離
HL2	-213483.666	-56133.075	-288243.340125	12.235
HL3	-213491.421	-56142.539	1159118.860194	16.672
HK10	-213504.312	-56131.967	288237.650545	12.233
HK11	-213496.556	-56122.507	-1158705.279522	16.668
		倍面積	407.891092	
		面積	203.9455460	
		地積	203.94	m ²

地番 257-7				
測点	Xn	Yn	(Xn+1 - Xn-1)Yn	距離
HK33	-213492.689	-56144.086	-359490.582658	10.236
HL4	-213499.176	-56152.004	1087888.925496	16.666
HK9	-213512.063	-56141.436	359473.614708	10.237
HK34	-213505.579	-56133.514	-1087530.700236	16.671
		倍面積	341.257310	
		面積	170.6286550	
		地積	170.62	m ²

地番 257-8				
測点	Xn	Yn	(Xn+1 - Xn-1)Yn	距離
HL4	-213499.176	-56152.004	-560172.391904	4.593
HK31	-213502.087	-56155.557	886977.022815	16.664
HK32	-213514.971	-56144.989	560102.410264	4.591
HK9	-213512.063	-56141.436	-886753.981620	16.666
		倍面積	153.059555	
		面積	76.5297775	
		地積	76.52	m ²

地番 257-9				
測点	Xn	Yn	(Xn+1 - Xn-1)Yn	距離
HK23	-213538.534	-56164.806	281722.666896	8.498
HK22	-213543.947	-56171.357	334781.287720	0.557
K6	-213544.494	-56171.251	-281754.995016	8.762
HK21	-213538.931	-56164.482	-334740.312720	0.512
		倍面積	8.646880	
		面積	4.3234400	
		地積	4.32	m ²

地番 257-10				
測点	Xn	Yn	(Xn+1 - Xn-1)Yn	距離
K17	-213506.907	-56161.438	-397679.142478	9.083
K18	-213512.707	-56168.428	443786.749628	3.191
HL5	-213514.808	-56170.830	834810.875460	16.499
HK7	-213527.569	-56160.372	279678.652560	12.279
HK8	-213519.788	-56150.873	-1160189.337926	16.660
		倍面積	407.797244	
		面積	203.8986220	
		地積	203.89	m ²

地番 257-11				
測点	Xn	Yn	(Xn+1 - Xn-1)Yn	距離
HL5	-213514.808	-56170.830	-158514.082260	15.097
K1	-213524.747	-56182.194	792281.299788	5.560
K2	-213528.910	-56178.509	526111.736785	6.455
K3	-213534.112	-56174.688	501639.963840	4.068
K4	-213537.840	-56173.061	439610.375386	4.303
K5	-213541.938	-56171.748	343040.865036	2.047
HK22	-213543.947	-56171.357	-191207.299228	8.498
HK23	-213538.534	-56164.806	-551201.406084	5.677
HK6	-213534.133	-56168.392	-615886.418280	10.364
HK7	-213527.569	-56160.372	-1085299.188900	16.499
		倍面積	575.846083	
		面積	287.9230415	
		地積	287.92	m ²

地番 257-12				
測点	Xn	Yn	(Xn+1 - Xn-1)Yn	距離
HK20	-213537.675	-56163.219	720630.262989	0.169
HK19	-213537.803	-56163.109	-559440.728749	15.890
K7	-213527.714	-56150.833	-926544.895333	10.158
K8	-213521.302	-56142.955	-497875.724940	3.852
K9	-213518.846	-56139.988	-466354.880316	9.224
K10	-213512.995	-56132.857	-979293.823222	18.272
K11	-213501.400	-56118.735	-1193084.306100	15.257
HK18	-213491.735	-56106.930	-1021370.553720	13.480
K12	-213483.196	-56096.499	-486244.453332	0.203
K13	-213483.067	-56096.342	-13743.603790	0.158
HK25	-213482.951	-56096.449	480017.314093	13.674
HK17	-213491.624	-56107.021	1072036.850247	16.457
HK26	-213502.058	-56119.748	1299621.124184	20.060
HK27	-213514.782	-56135.256	1286283.255984	16.058
HK28	-213524.972	-56147.666	1285388.517738	20.081
		倍面積	24.355733	
		面積	12.1778665	
		地積	12.17	m ²

地番 257-13				
測点	Xn	Yn	(Xn+1 - Xn-1)Yn	距離
HK31	-213502.087	-56155.557	-452838.411648	7.604
K17	-213506.907	-56161.438	994113.614038	16.660
HK8	-213519.788	-56150.873	452800.639872	7.604
HK32	-213514.971	-56144.989	-993822.450289	16.664
		倍面積	253.391973	
		面積	126.6959865	
		地積	126.69	m ²

地番 257-14 (予定地番)				
測点	Xn	Yn	(Xn+1 - Xn-1)Yn	距離
HL3	-213491.421	-56142.539	-652544.730797	2.000
HK33	-213492.689	-56144.086	794887.969588	16.671
HK34	-213505.579	-56133.514	652439.833222	2.000
HK10	-213504.312	-56131.967	-794716.388786	16.672
		倍面積	66.683227	
		面積	33.3416135	
		地積	33.34	m ²