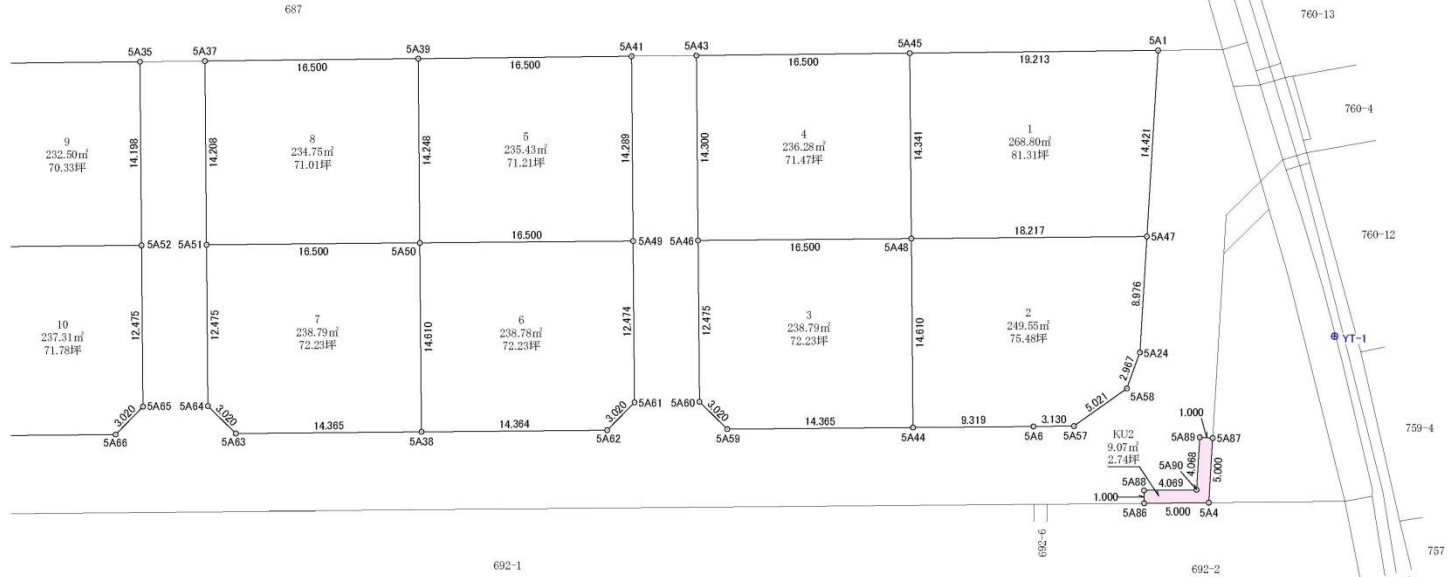


※造成完了後、面積に若干の増減を生じる場合があります。



S=1/250



点名	X座標	Y座標	備考
YT-1	-218253.557	-55823.387	道路基準点
YT-1-1	-218218.243	-55759.659	道路基準点
YT-1-1	-218218.674	-55840.838	道路基準点
YT-2	-218166.869	-55870.277	道路基準点
YT-3	-218129.000	-55901.033	道路基準点
YT-4	-218111.904	-55833.600	道路基準点
YT-5	-218152.671	-55859.982	道路基準点
YT-6	-218193.097	-55836.464	道路基準点

地番 1

N O	Xn	Yn	Yn+1-Yn-1	Xn*(Yn+1-Yn-1)	距離
5A45	-218214.150	-55820.865	22.148	-482006.994300	1.9. 2.13
5A1	-218230.881	-55811.073	-3.509	678479.187259	1.4. 4.21
5A47	-218237.123	-55823.974	-22.148	-482015.844500	1.5. 2.11
5A48	-218221.429	-55833.221	3.509	-678460.428761	1.4. 3.41
合計				537.614768	
面積				238.927384	
坪				81.31	

地番 2

N O	Xn	Yn	Yn+1-Yn-1	Xn*(Yn+1-Yn-1)	距離
5A48	-218221.429	-55833.221	21.655	-476484.992215	1.8. 2.17
5A47	-218237.123	-55823.974	1.217	-265594.581155	3. 97.6
5A24	-218221.136	-55832.004	-10.960	2389740.439300	2. 9.67
5A28	-218241.661	-55834.924	7.484	-163320.599024	5. 0.21
5A57	-218239.569	-55839.488	-6.155	134204.547195	3. 1.30
5A9	-218236.374	-55841.079	-6.201	137475.289854	3. 31.9
5A44	-218228.845	-55845.809	7.855	-171482.584905	1.4. 61.0
合計				499.110523	
面積				245.555211	
坪				75.48	

地番 3

N O	Xn	Yn	Yn+1-Yn-1	Xn*(Yn+1-Yn-1)	距離
5A49	-218207.212	-55841.596	19.252	-427276.180476	1.6. 5.00
5A43	-218221.429	-55833.221	-4.211	90946.890317	1.4. 61.0
5A44	-218228.845	-55845.809	-19.479	438171.299755	1.4. 36.5
5A59	-218216.468	-55853.100	-6.535	142044.618380	3. 0.20
5A60	-218213.544	-55852.344	11.594	-251028.610176	1.2. 47.4
合計				477.583260	
面積				238.791630	
坪				72.23	

地番 4

N O	Xn	Yn	Yn+1-Yn-1	Xn*(Yn+1-Yn-1)	距離
5A43	-218199.854	-55829.275	-29.751	-452593.246574	1.6. 5.00
5A49	-218214.150	-55850.855	-3.946	862593.605900	1.4. 34.1
5A48	-218221.429	-55833.221	-20.751	-452593.645999	1.6. 5.00
5A49	-218207.212	-55841.596	3.946	-861945.645952	1.4. 30.0
合計				472.676573	
面積				236.287786	
坪				71.47	

地番 5

N O	Xn	Yn	Yn+1-Yn-1	Xn*(Yn+1-Yn-1)	距離
5A39	-218131.439	-55840.243	-3.901	-853393.247594	1.6. 5.00
5A41	-218195.635	-55831.833	-8.901	185181.170155	1.4. 28.9
5A49	-218202.888	-55844.144	-20.686	-451574.941368	1.6. 5.00
5A50	-218138.671	-55852.519	3.901	-85154.965571	1.4. 24.8
合計				470.860578	
面積				235.430283	
坪				71.21	

地番 6

N O	Xn	Yn	Yn+1-Yn-1	Xn*(Yn+1-Yn-1)	距離
5A50	-218138.671	-55852.519	-20.963	-447389.110175	1.6. 5.00
5A49	-218202.888	-55844.144	-5.373	517795.453254	1.2. 47.4
5A51	-218209.219	-55854.892	-13.672	299356.442389	3. 0.20
5A52	-218208.453	-55857.816	-10.215	222994.444465	1.4. 36.4
5A58	-218196.087	-55865.107	5.597	-115574.673829	1.4. 61.0
合計				477.581325	
面積				238.780962	
坪				70.23	

地番 7

N O	Xn	Yn	Yn+1-Yn-1	Xn*(Yn+1-Yn-1)	距離
5A51	-218174.455	-55850.894	-19.124	-417268.271259	1.6. 5.00
5A50	-218138.671	-55852.519	-4.211	91258.276625	1.4. 61.0
5A58	-218196.087	-55865.107	-19.880	-433758.209560	1.4. 36.5
5A53	-218183.710	-55872.399	-6.536	142044.618380	3. 0.20
5A54	-218130.786	-55871.643	11.559	-251028.610176	1.2. 47.4
合計				477.583260	
面積				238.794346	
坪				72.23	

地番 8

N O	Xn	Yn	Yn+1-Yn-1	Xn*(Yn+1-Yn-1)	距離
5A37	-218167.243	-55848.652	20.651	-450371.735106	1.6. 6.00
5A39	-218181.439	-55840.243	-3.867	842707.624613	1.4. 24.8
5A50	-218138.671	-55852.519	-20.686	-452593.645999	1.6. 5.00
5A51	-218174.455	-55850.894	3.867	-842680.671485	1.4. 20.8
合計				469.516756	
面積				234.758375	
坪				71.01	

地番 KU2

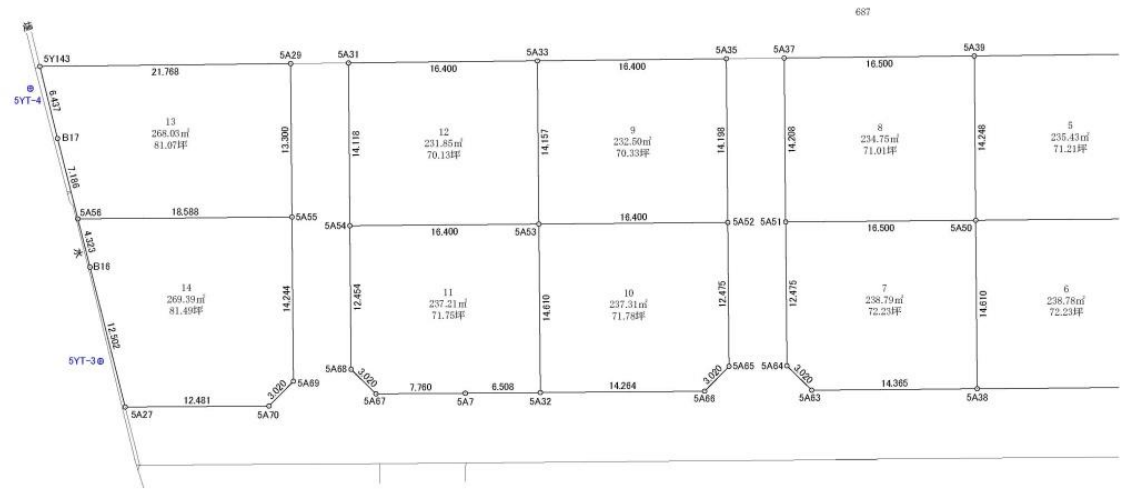
N O	Xn	Yn	Yn+1-Yn-1	Xn*(Yn+1-Yn-1)	距離
5A89	-218248.431	-55835.376	4.066	-891763.089266	1. 0.00
5A83	-218249.326	-55834.923	-4.989	878871.786176	5. 0.00
5A4	-218221.860	-55833.402	-7.038	151089.448980	5. 0.00
5A86	-218247.256	-55841.947	-1.684	367528.379104	1. 0.00
5A82	-218246.747	-55841.086	2.922	-639999.482594	4. 0.69
5A90	-218250.248	-55839.016	4.739	-1046096.921790	4. 0.69
合計				18.140600	
面積				9. 070300	
坪				2. 74	

令和5年3月14日測量 世界測地系Ⅲ

宅地求積図(1/2)		⑤
防府市大字新田字年田		S=1/250
山根 勇		R5.7.24



S=1/250



地番	p	N.O	Xn	Yn	Yn+1-Yn-1	Xn*(Yn+1-Yn-1)	距離
5A3	-21814.8	813	-66875.589	30.887	-66844.699	1.0	4.00
5A35	-21816.2	933	-66851.210	-3.874	-66855.084	1.4	1.92
5A33	-21817.0	139	-66863.443	-30.887	-66894.330	1.6	4.00
5A31	-21815.5	999	-66871.787	3.874	-66867.913	1.4	1.57
合計						4.6	0.16582
面積						23.5	0.63924

地番	10	N.O	Xn	Yn	Yn+1-Yn-1	Xn*(Yn+1-Yn-1)	距離
5A5	-21815.5	999	-66871.787	30.912	-66840.875	1.6	4.00
5A52	-21817.0	129	-66863.443	-2.425	-66865.868	1.2	4.77
5A51	-21817.6	481	-66874.381	-14.672	-66920.052	3.0	2.20
5A56	-21817.5	705	-66877.116	-10.366	-66986.760	1.4	2.64
5A32	-21818.3	414	-66884.336	5.348	-66878.988	1.4	6.10
合計						8.74	6.33910
面積						29.7	3.18000
坪							7.178

地番	11	N.O	Xn	Yn	Yn+1-Yn-1	Xn*(Yn+1-Yn-1)	距離
5A53	-21814.1	869	-66880.081	19.995	-66860.086	1.6	4.00
5A54	-21815.5	999	-66871.787	-4.164	-66875.951	1.4	9.16
5A30	-21816.3	416	-66884.316	-15.891	-66900.427	6.0	6.03
5A7	-21816.7	308	-66887.858	-7.128	-66955.266	7.0	6.00
5A57	-21816.1	143	-66893.481	-3.164	-66928.315	3.0	2.81
5A58	-21814.8	190	-66899.823	11.099	-66888.724	1.2	4.54
合計						4.74	48.246
面積						23.7	3.18075
坪							7.178

地番	12	N.O	Xn	Yn	Yn+1-Yn-1	Xn*(Yn+1-Yn-1)	距離
5A1	-21813.4	703	-66867.327	39.322	-66768.046	1.6	4.00
5A39	-21814.8	813	-66875.429	-3.169	-66881.259	1.4	1.92
5A53	-21815.5	999	-66871.787	-30.422	-66902.474	1.6	4.00
5A54	-21814.1	869	-66880.081	3.940	-66884.140	1.4	1.92
合計						4.6	10.842
面積						23.1	6.03084
坪							7.013

690

地番	13	N.O	Xn	Yn	Yn+1-Yn-1	Xn*(Yn+1-Yn-1)	距離
5Y143	-21811.1	557	-66861.890	15.769	-66846.121	2.1	7.68
5A29	-21813.0	394	-66870.438	-3.269	-66873.669	1.3	3.00
5A55	-21813.7	135	-66881.946	-20.849	-66902.781	1.8	6.88
5A59	-21812.1	117	-66891.310	-4.201	-66935.511	7.0	1.84
B17	-21811.6	111	-66896.228	3.900	-66900.329	6.4	4.77
合計						5.88	6.1789
面積						26.8	0.80894
坪							8.137

692-5

地番	14	N.O	Xn	Yn	Yn+1-Yn-1	Xn*(Yn+1-Yn-1)	距離
5A51	-21812.1	117	-66891.310	18.651	-66872.659	1.8	6.88
5A55	-21813.7	135	-66881.946	-2.899	-66879.047	1.4	2.44
5A63	-21814.4	357	-66894.218	-18.199	-66912.417	3.0	2.00
5A70	-21814.3	908	-66897.141	-3.594	-66932.634	1.2	4.81
5A27	-21813.2	838	-66903.482	6.881	-66910.361	1.2	6.02
B16	-21812.4	132	-66894.480	18.073	-66886.407	4.0	3.23
合計						8.28	18.377
面積						26.9	3.93693
坪							8.149

692-1

地番	K12	N.O	Xn	Yn	Yn+1-Yn-1	Xn*(Yn+1-Yn-1)	距離
5A9	-21824.8	431	-66925.375	4.999	-66930.374	1.0	0.00
5A37	-21824.9	321	-66932.319	-4.999	-66937.318	2.0	0.00
5A4	-21825.1	860	-66939.402	-7.918	-66947.320	8.0	0.00
5A8	-21824.7	228	-66941.747	-1.684	-66943.431	1.0	0.00
5A83	-21824.6	747	-66941.086	0.902	-66942.014	4.0	0.03
5A90	-21825.0	249	-66939.015	8.759	-66947.774	4.0	0.88
合計						1.8	1.44000
面積						9.0	0.03000
坪							2.744

地番	文書番	文書種	備考
5Y1-1	-21825.3	557	-66893.381
5Y1-1-1	-21825.8	816	-66899.639
5Y1-1-1-1	-21826.1	114	-66903.727
5Y1-2	-21816.6	869	-66870.371
5Y1-3	-21819.0	200	-66901.083
5Y1-4	-21811.1	904	-66896.064
5Y1-5	-21812.2	671	-66899.382
5Y1-6	-21812.3	587	-66898.464

令和5年5月14日測量 世界測地系国系

宅地求積園(2/2)		⑤
防府市大字新田半牟田		
山根 勇		R5.7.24